

PLAT OF GARDEN CONDOMINIUM APARTMENTS

IN SECTIONS 10 AND 11, TOWNSHIP 44 SOUTH, RANGE 42 EAST
PALM BEACH COUNTY, FLORIDA

BEING A REPLAT OF A PORTION OF TRACTS 29 AND 30, MODEL LAND COMPANY'S SUBDIVISION
RECORDED IN PLAT BOOK 5, PAGE 76, PUBLIC RECORDS OF PALM BEACH COUNTY, FLORIDA

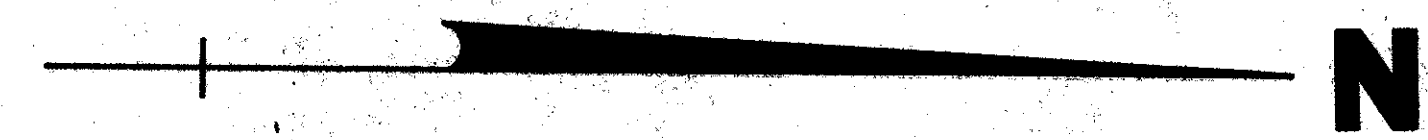
IN 2 SHEETS SHEET NO. 2

74

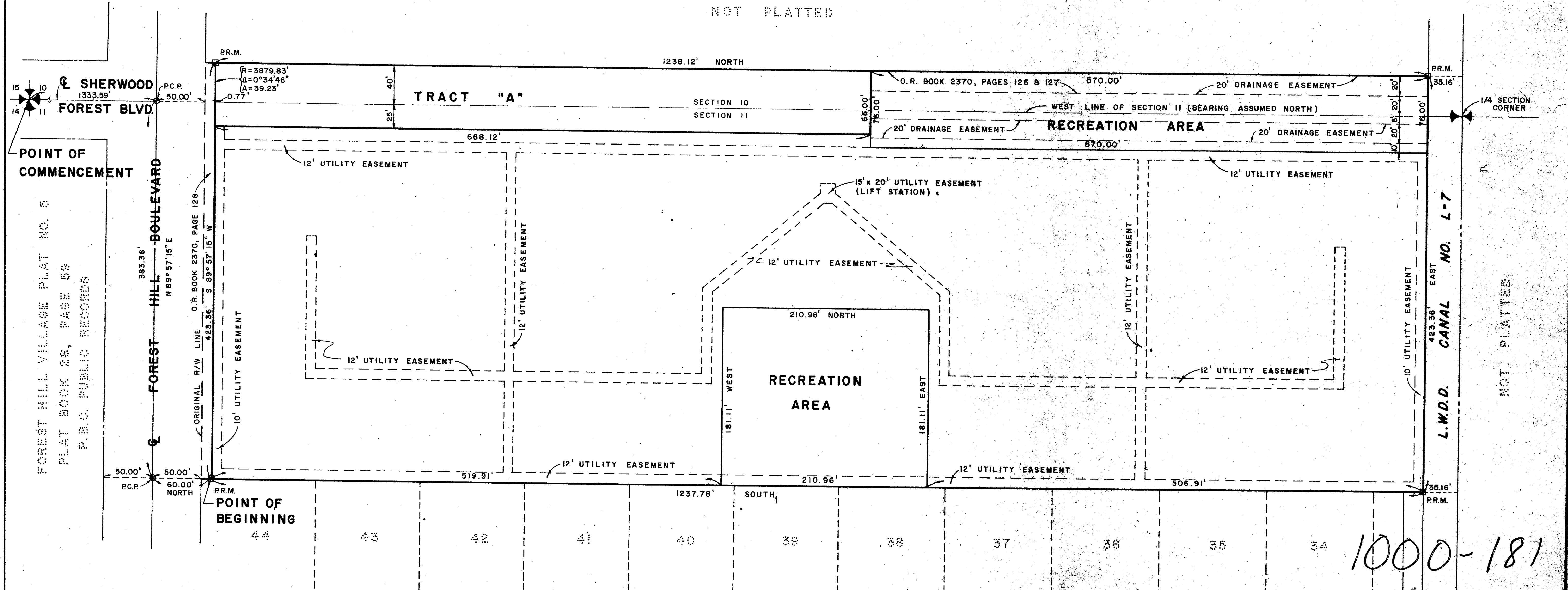
32

PUD

STATE OF FLORIDA)
COUNTY OF PALM BEACH) ss.
This Plat was filed for record at _____ M.
this _____ day of _____
19 _____, and duly recorded in Plat Book No. _____
on page _____
JOHN B DUNKLE, Clerk Circuit Court
By _____ D. C.



NOT PLATTED



FOREST HILL VILLAGE PLAT NO. 5
PLAT BOOK 28, PAGE 58
P.B.C. PUBLIC RECORDS

L.W.D. CANAL NO. L-7
EAST

NOT PLATTED

1000-181
31/74

SURVEYOR'S NOTES:

- The bearings on this plat are assumed.
- Building setback lines shall be as required by Palm Beach County, Florida.
- There shall be no buildings, trees, shrubs, or construction of any kind on the drainage and/or utility easements.
- There shall be no construction or planting of trees and shrubs over 3.0 feet in height within the sight plane necessary to provide the minimum safe sight distance required on all corner lots or tracts.
- There shall be no surface appurtenances permitted on the maintenance easements.

FOREST MANOR PLAT BOOK 28, PAGE 17
P.B.C. PUBLIC RECORDS

THIS INSTRUMENT WAS PREPARED BY
JAY SWEET IN THE OFFICE OF

ROSSI AND MALAVASI ENGINEERS, INC. WEST PALM BEACH, FLORIDA		PLAT OF GARDEN CONDOMINIUM APARTMENTS PALM BEACH COUNTY, FLORIDA IN 2 SHEETS SHEET NO. 2	
Date	July, 1974	Designed	R. ANDERSON
Drawn	R. ANDERSON	Scale	1" = 50'
Job No.	3043-74	Sheet	2 of 2

GARDEN Condominium APT